

Norwex



Norwex

The Norwex mission is to improve human life by radically reducing the use of chemicals in personal care and cleaning.

A cleaner future



NORWEX CANADA
+1 204 622 3600
info@norwex.com

NORWEX BALTIC
+371 7 816 216
info@norwex.no

NORWEX HOLDING
+47 6395 6620
info@norwex.no

NORWEX CHINA
+86 21 6587 4701
info@norwex.com.cn

www.Norwex.com

www.Norwex.com

Norwex Antibacterial Microfiber is a new microfiber (patent pending) that contains an environmentally friendly antibacterial agent that has passed both FDA and EPA approval. Since it is environmentally friendly you still clean without chemicals with our antibacterial microfiber. To make an effective antibacterial microfiber it must be able to withstand being laundered through the life span of the product without losing its effect. Up to now this has not been possible because the most agents have been coated on the outside of the microfiber. Norwex has managed to develop a technology combined with an agent with the right physical properties to be able to put the antibacterial agent inside a tiny microfiber with a size of 0.3 Denier or smaller.

The result of this is microfiber products with a long lasting highly effective antibacterial effect. The Norwex antibacterial microfiber has been tested on several bacteria including:

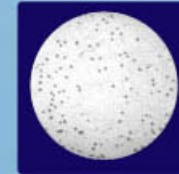
- S. Aureus
- K. Pneumonia
- E. Coli



A Cleaner Future

The results of these tests showed that the bacteria in the microfiber itself was reduced by more than 99.99%¹ after 18 hours, while a normal microfiber had a bacteria growth of 14,000%¹.

The antibacterial agent has also been tested on the SARS and H5N1 Viruses. The results showed that the agent was 100% effective¹ after 1 hour for H5N1 and a definite inactivation effect of a SARS virus after 6 hours¹.



Bacteria content in a cloth made with the normal Norwex Microfiber after 0 hours and 24 hours



Bacteria content in a cloth made with the new Norwex Antibacterial Microfiber after 0 hours and 24 hours

¹ Due to the nature of these bacteria, all tests were conducted in a controlled laboratory environment, and as such is not a 100% true representation of normal living environment. As such it is not known if the same results are true in an uncontrolled normal living environment such as office buildings, schools, private homes etc. Copies of the test reports are available upon request to Norwex.

